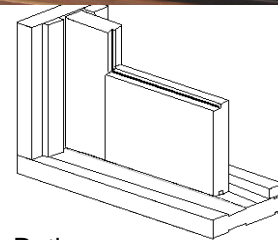




DESIGN FEATURES

- Successfully tested to comply with Australian standard AS 2047
- Hardwood sill is used for longevity.
- Doors can be manufactured with 2 sliding panels in each direction.
- 6 panel Slide-A-Side doors are designed for large openings up to 6126mm wide.
- Full range of door to window products available, which allows this door to be joined to any of the timber range vertically. Glass is sealed from both sides to prevent leakage.
- Wide top & bottom rails give the door a bold appearance.
- All doors are supplied with a keyed deadlock as standard.
- All doors have MOTIF adhered to glass as standard.
- Flyscreen options available in either a separate timber frame or a CENTOR S1 retractable screen system.



700/150Pa Wind/Water Rating

Maximum Panel Height	2340mm - 3 Panel 2040mm - 6 Panel
Maximum Overall Height	2408mm - 3 Panel 2108mm - 6 Panel
Maximum Overall Width	3536mm - 3 Panel 6126mm - 6 Panel
Maximum Glass Width	6.38mm

Subject to individual site conditions. Contact HANLON WINDOWS Technical Support for more information.



AWA / WERS RATED PRODUCT



ENHANCED ACOUSTIC PERFORMANCE



PRODUCT INFORMATION AVAILABLE AT
WWW.HANLONWINDOWS.COM.AU



SPECIFIER ASSISTANCE AVAILABLE

TYPICAL CONFIGURATIONS

