



# SUSTAINABLE HOUSING PROJECT

## DISPLAY HOME MAXIMISES ENERGY EFFICIENCY

WITH HANLON WINDOWS WESTERN RED CEDAR WINDOWS AND DOORS



Leading window manufacturer Hanlon Windows were approached to provide the most environmentally friendly and energy efficient windows and doors for a NSW South Coast project called 'Sustaining Our Shoalhaven' or The S.O.S. House Project.

The SOS House Project was built to promote choice in more sustainable housing design, products and inclusions - through the construction of a 'display home' demonstrating many such examples.

Hanlon Windows supplied Western Red Cedar windows and doors for the project because of their ability to achieve low U-values and they are an excellent choice for sustainability and performance.

Viridian Low E ComfortPLUS glass was installed to lessen the heat / cold transfer and retain the ambient temperature of the building, which helps to reduce overall energy costs.

The large raked windows allow light to enter the building and improve the daylight quality of the rooms, whilst the high louvre windows assist the house in passive cooling and cross ventilation.

Bi-Fold doors are a beautiful addition to the house; opening up onto a large paved entertaining area they glide effortlessly and provide a seamless transition to the outside entertainment area.

The house will be open to the public for twelve months, and will also be used as a venue for housing-related forums, workshops and various activities throughout the year.

The project was the brain child of Max Zalakos (Owner and Principal Sponsor) and was designed by Colin Irwin from BHI Architecture. Grant Taylor of Assist Building was responsible for building the project and did a remarkable job.



AUSTRALIAN WINDOW ASSOCIATION  
Your Guarantee of Performance







# PROJECT FEATURE



## PRODUCTS SUPPLIED IN PROJECT:

HANLON WINDOWS Western Red Cedar Timber Sliding Windows, Louvre Windows, Awning Windows, 90Deg Silicon Corner Windows, Raked Head Windows, 3 Panel Sliding Doors and 4 Panel Euro Bi-Fold Doors.

VIRIDIAN 6.38mm ComfortPLUS Clear, 6mm ComfortSAVE Clear - Toughened, 6mm Energy Advantage - Toughened and 6mm Satinlite - Toughened.

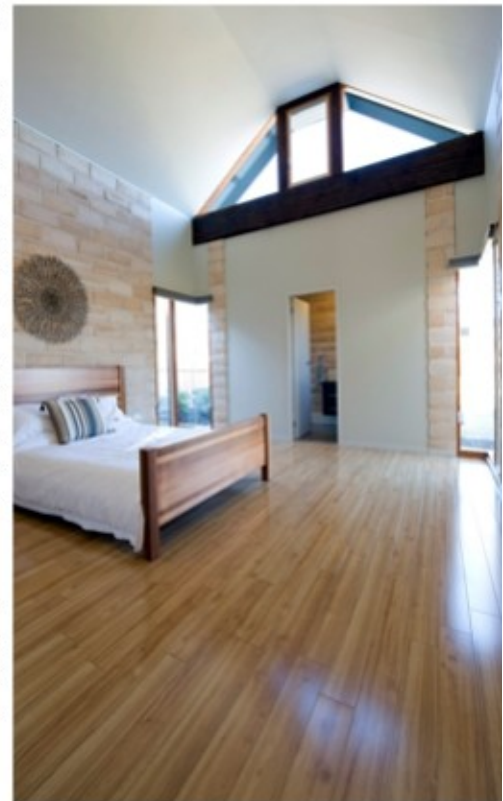
HANLON WINDOWS recognises that our customers are now seeking more energy efficient and environmentally friendly products without compromising style and quality. The Cedar windows and doors supplied on this project are fitted with Viridian high performance glass to achieve low U-values for increased insulation.

The Windows and doors installed on the project had to achieve low U-values in accordance with BASIX, but also allow plenty of natural light to enter the building for passive solar heat gain. The selection of Hanlon Windows Western Red Cedar products in combination with Viridian's ComfortPLUS Clear provided the perfect solution and exceeded the levels required to pass the thermal efficiency section of BASIX.

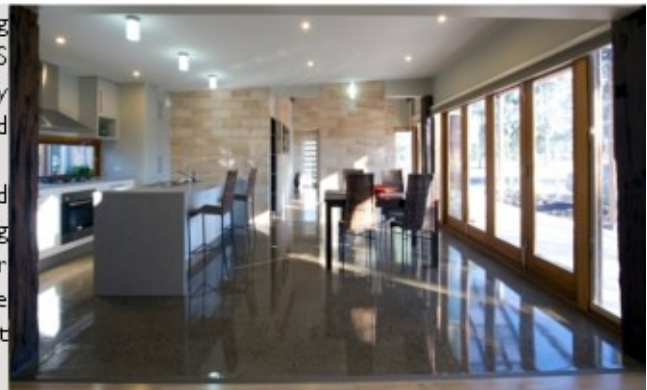
This project was designed not to rely on air conditioning as a climate control and focus on energy saving through careful selection of glazing location, frame type and size, as well as the incorporation of external shading devices, the use of thermal mass in floors and walls, and the use of natural cross ventilation. All electrical equipment was selected on achieving high energy efficiency, which included a grid connected 1.5kw solar pv cell roof collector system.

The design incorporates the principle of cross ventilation through the entire house. This is achieved with large areas of glass to the North to capture breezes through a variety of opening types that permit infinite adjustability of air flow, whatever the weather conditions are at the time. This is done using sliding and bi-fold doors as well as awning, sliding and louvre window configurations. The exit air control is via higher openings, smaller in area to slightly pressurize the interior of the house, which aids dust exclusion, and to minimize heat loss on the Southern side. The exit air flow windows are of louvre configuration to allow for precise air flow control.

This outstanding project was recognised at the Australian Window Associations Design Awards in 2010, winning the Best Use of Windows in a Residential New Construction category.



Hanlon Windows (Australia) Pty Ltd are the leading manufacturer of Vantage Residential and AWS Commercial aluminium products in Australia. They also manufacture Western Red Cedar windows and doors and specialise in energy efficient products. Hanlon Windows are 100% Australian owned and operated with over 30 years manufacturing experience. High quality products and good customer service are paramount at Hanlon's and they have the experience to assist you in selecting the right windows and doors for your next project.



**Hanlon Windows Head Office**  
41 Bolong Rd  
Bomaderry NSW 2541  
Ph: (02) 4421 5811  
Fax: (02) 4421 0739

**HANLON WINDOWS (AUST) PTY LTD**  
Ph: 1300 552 400  
[www.hanlonwindows.com.au](http://www.hanlonwindows.com.au)  
Sydney-Wollongong-Bomaderry-Canberra

